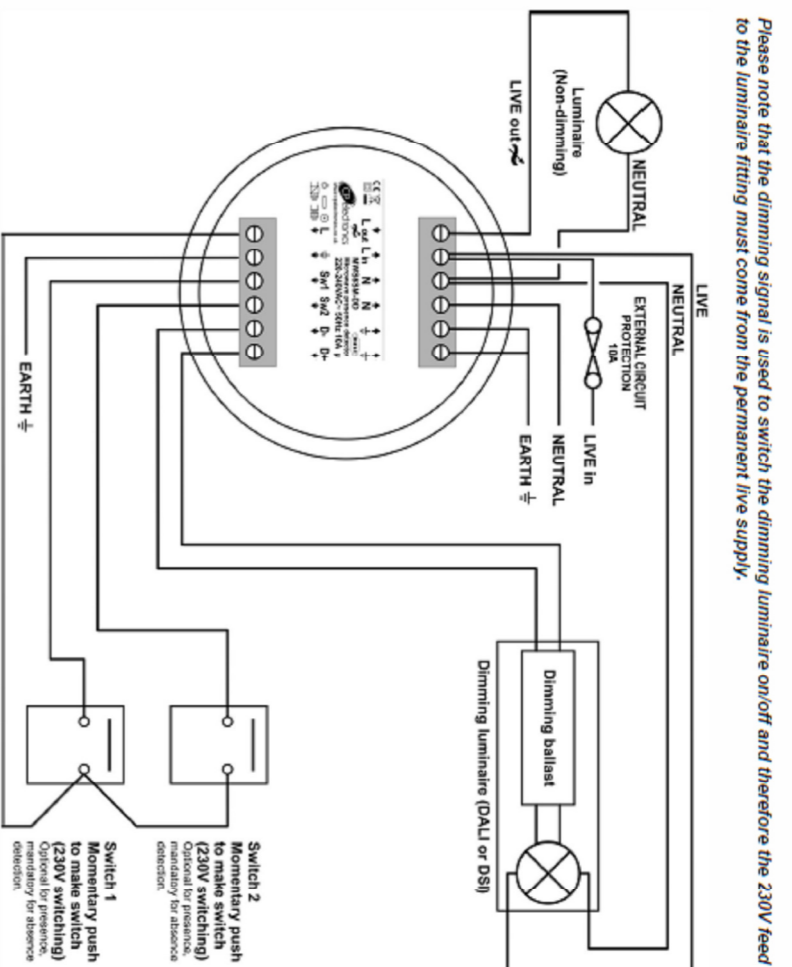


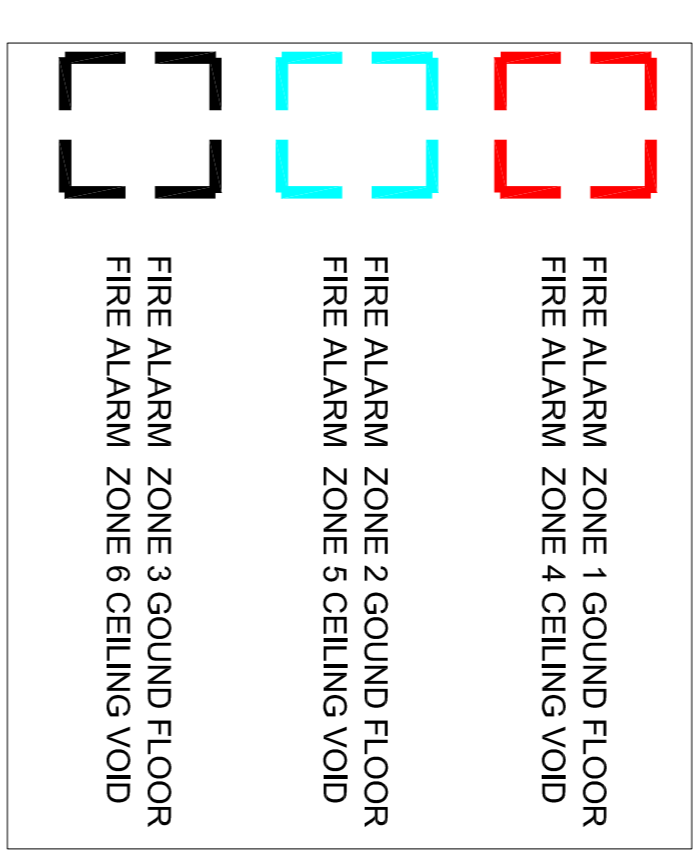
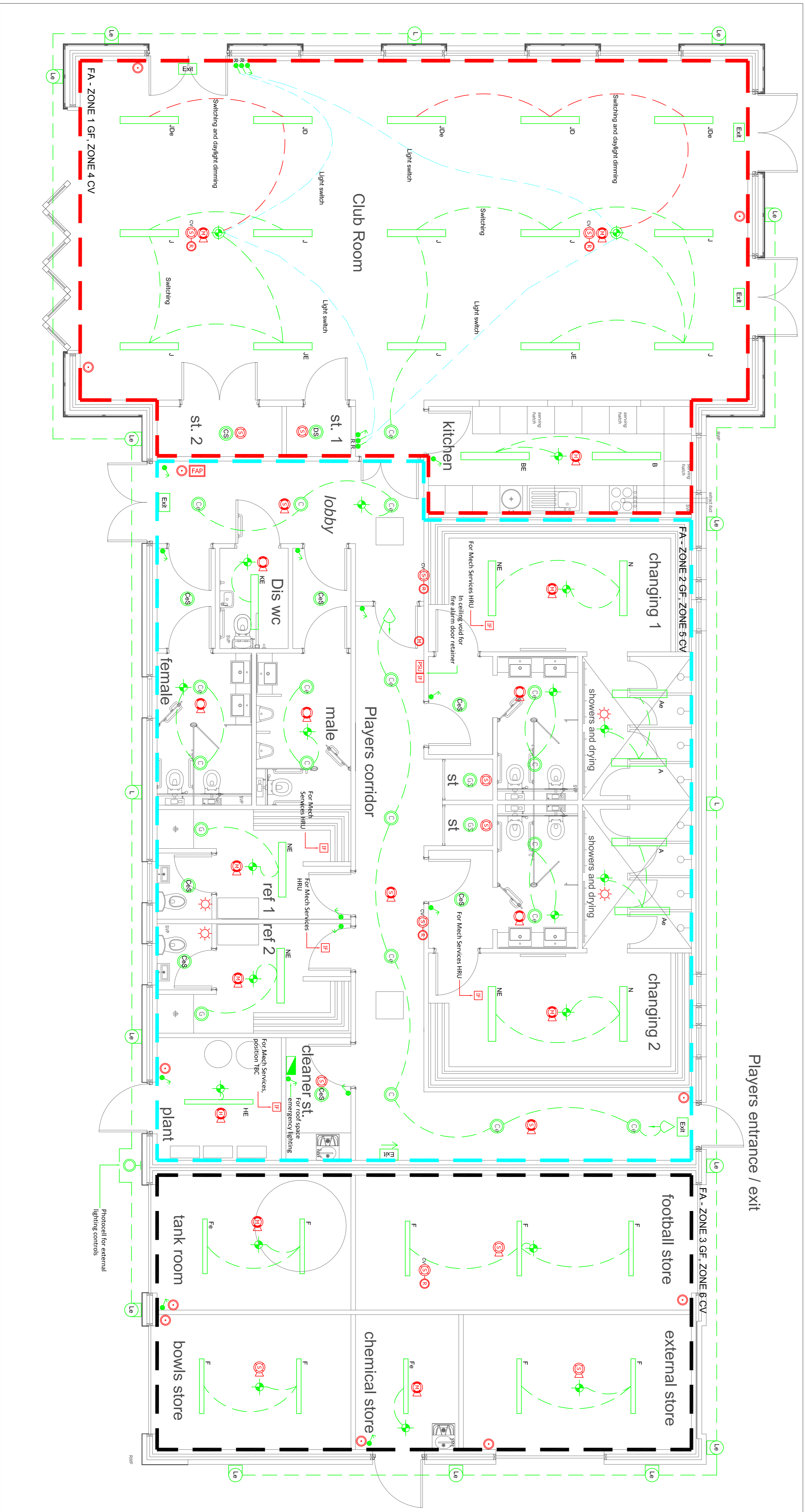
**Wiring diagrams (cont.)**

**Two channel, individual switches**

Functions: Switches both channels with occupancy. Maintains luminance, dims and switches the dimming channel using optional single position selective switch (switch 2). Switches the switching channel using the optional single channel switch (switch 1).  
 Configured to a reference address. Turns on automatically with occupancy. Maintains luminance (dimming channel only). Press and release switch to toggle output. Press and hold switch to dim up and down (reverses direction with each press) to a user set occupancy level. Press and hold switch to turn on. Maintains luminance (dimming channel only). Press and release switch to turn off. Press and hold switch to dim up and down (reverses direction with each press).  
 Turns off after occupancy.  
 Occupancy sensor: Detects occupancy and provides control for the dimming luminance only. The room occupancy sensor is not used for switching.  
 Switch mode: Set to '1' position switch separate.  
 Please note that the dimming signal is used to switch the dimming luminance on/off and therefore the 230V feed to the dimming wiring must come from the permanent live supply.



**MANUFACTURES WIRING SCHEMATIC - CLUB ROOM LIGHTING CONTROLS**



- NOTES**
- DRAWING TO BE READ IN CONJUNCTION WITH THE ELECTRICAL SPECIFICATION AND ALL OTHER ELECTRICAL DRAWINGS
  - REFER TO LUMINAIRE SCHEDULE WITHIN SPECIFICATION APPENDICES FOR FURTHER DETAILS OF LUMINAIRES
  - REFER TO DRAWING AX1725-E-05 FOR ELECTRICAL LEGEND

no.	description	date	NR	AW
A	Tender Issue	Dec-17		

Information	approval	tender	contract	construction
<input type="checkbox"/>	<input type="checkbox"/>	<input checked="" type="checkbox"/>	<input type="checkbox"/>	<input type="checkbox"/>

Axis Mechanical & Electrical Consulting Engineers  
 No. 8 Poplars Court  
 London Lane  
 Nottingham  
 NG7 2BK  
 United Kingdom  
 Tel: +44 (0) 115 9791975  
 email: melli@axisconsult.co.uk  
 web: www.axisconsult.co.uk

**AXIS**  
 M&E Consulting Engineers

**client**

**project**  
 NEW SPORTS PAVILION  
 BRAUNSTONE

**drawing**  
 ELECTRICAL SERVICES  
 LIGHTING, EMERGENCY LIGHTING  
 AND FIRE ALARMS

drawn	approved	date	scale
N.R.	A.W.	OCT17	1:50@A1

drawing ref: AX1725-E-01  
 revision: A