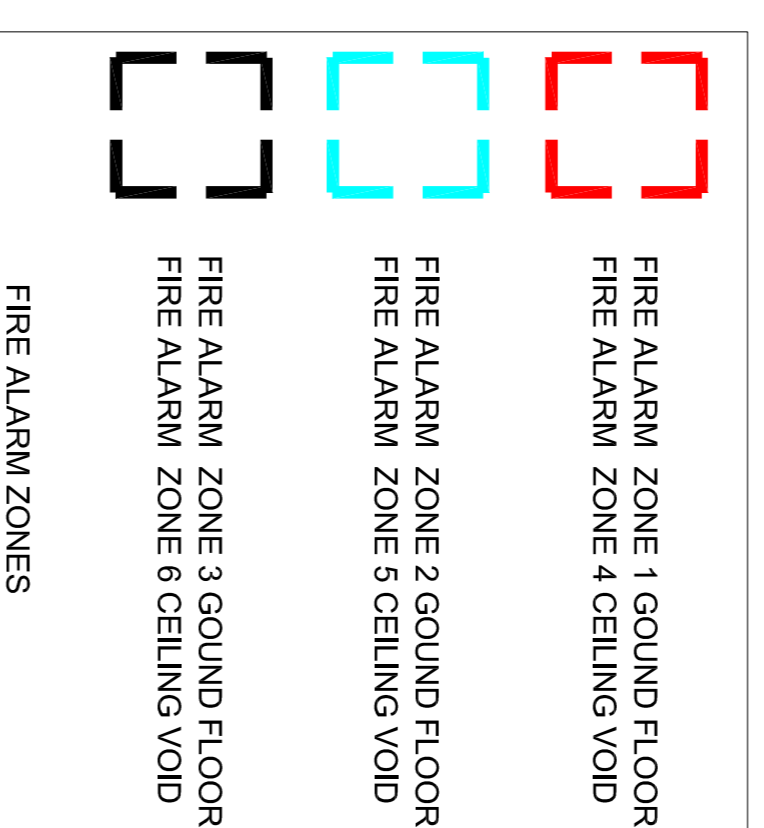


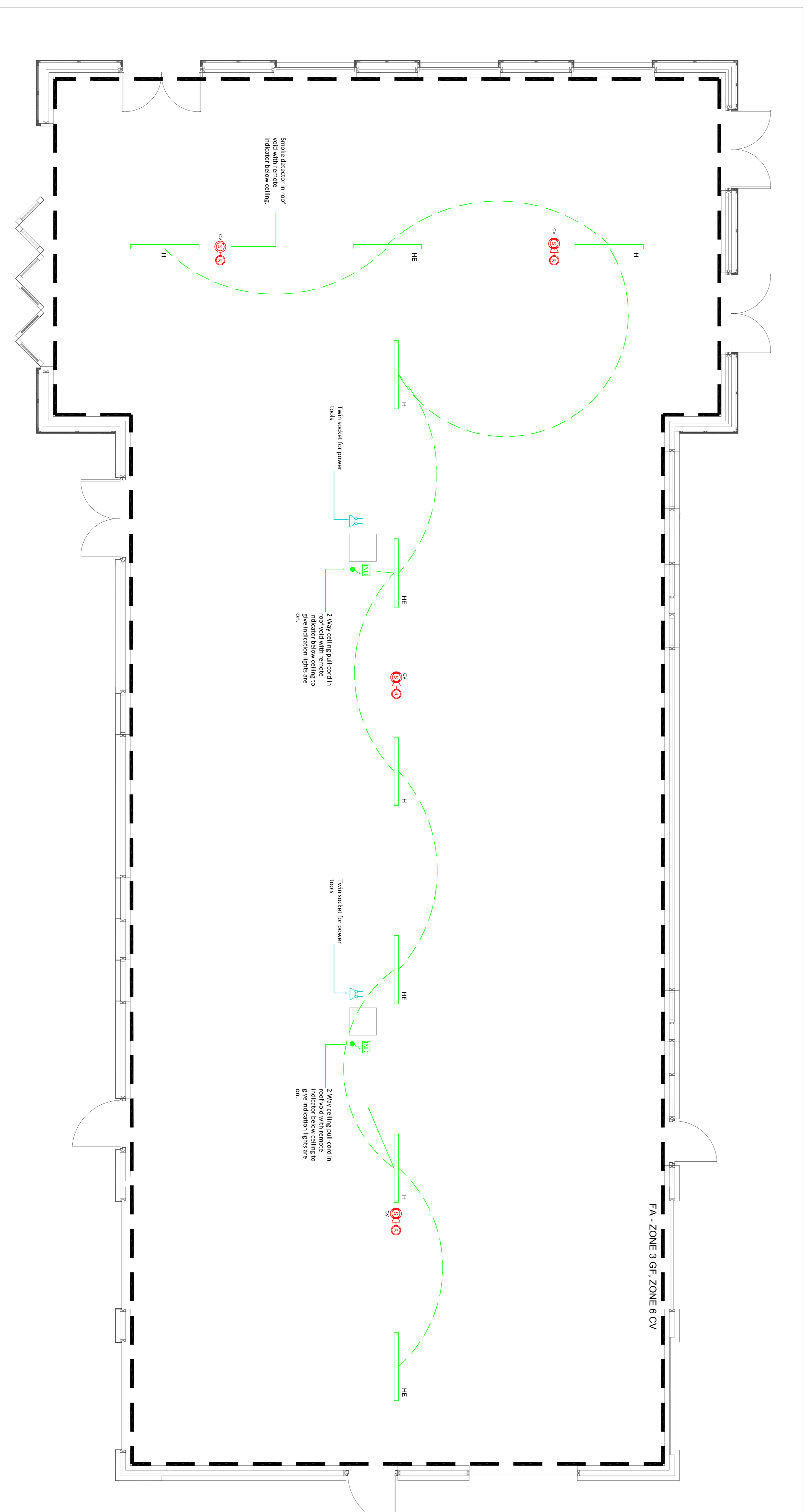


TYPES F & H  
GLAMOX 140

LUMINAIRE IMAGES - SEE LUMINAIRE SCHEDULE WITHIN SPECIFICATION FOR FURTHER DETAILS



FA - ZONE 3 GF, ZONE 6 CV



- NOTES
- DRAWING TO BE READ IN CONJUNCTION WITH THE ELECTRICAL SPECIFICATION AND ALL OTHER ELECTRICAL DRAWINGS
  - REFER TO LUMINAIRE SCHEDULE WITHIN SPECIFICATION APPENDICES FOR FURTHER DETAILS OF LUMINAIRES
  - REFER TO DRAWING AX1725-E-05 FOR ELECTRICAL LEGEND

no.	description	date	drawn	approved
A	TENDER ISSUE	DEC 17	NR	AW

Information  approval  tender  contract  construction

Axis Mechanical & Electrical Consulting Engineers  
 No. 8 Poplars Court  
 Lenton Lane  
 Nottingham  
 NG7 2BK  
 United Kingdom  
 Tel: +44 (0) 115 9319175  
 Fax: +44 (0) 115 9319176  
 email: mail@axisconsult.co.uk  
 web: www.axisconsult.co.uk



client  
 Project  
 NEW SPORTS PAVILION  
 BRAUNSTONE

drawing  
 ELECTRICAL SERVICES  
 ROOF SPACE

drawn	approved	date	scale
N.R.	A.W.	OCT17	1:50@A1

drawing no. AX1725-E-05  
 revision A