



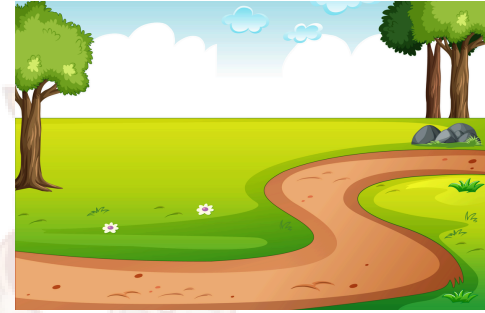
STRATEGIC AIMS AND DELIVERY OBJECTIVES (2025/2026)

Aim: To invest in and maintain high quality urban green spaces for sport, recreation and play, while enriching the natural environment.

1. Protect and Enhance our Parks and Open Spaces

Delivery Objectives for 2025/2026:

- (a) Support existing Clubs at Shakespeare Park to grow while supporting new sporting activities, such as Tennis and Petanque;
- (b) deliver tennis initiatives to enhance participation;
- (c) commence project to shape the refurbishment of Mossdale Sports Changing Rooms and Parks Depot;
- (d) carry out Flood Alleviation and Drainage Improvements at Mossdale Meadows; and
- (e) refurbish and enhance Impey Close Play Area and surrounding open space.



2. Provide Vibrant Community Facilities



Aim: To provide vibrant, accessible and cost effective community facilities, which continue to be used by and respond to the needs of our community.

Delivery Objectives for 2025/2026:

- (a) Deliver essential works on the Civic Centre building fabric; and
- (b) support the expansion of the Civic Centre Café Service, including opportunities to promote facilities and buffets with hires.

Aim: To both nurture and enhance the Town's community life and connect our communities to reduce isolation and build community cohesion.

3. Support and Connect the Local Community

Delivery Objectives for 2025/2026:

- (a) Support new and existing community activities and initiatives through our Community Grants Schemes and Programme of Events;
- (b) co-ordinate community events, such as Apple Day, 80th Anniversary of the ending of World War II, Shakespeare Park Open Day, and Thorpe Astley on the Beach;
- (c) develop outreach Children's reading and activities at Thorpe Astley Community Centre; and
- (d) support the Local Area Coordination Project.



4. Respond to Climate Change and champion sustainable development

Aim: To embed climate and environmental awareness in our decision making and actions and play our part in supporting the community to do the same.

Delivery Objectives for 2025/2026:

- (a) Deliver actions identified in the Carbon Audit with a view to the Council becoming Carbon Neutral by 2030;
- (b) undertake surveys and produce Management Plans to enhance the biodiversity of our parks and open spaces;
- (c) support and facilitate initiatives to improve cycling and walking routes within the Town and to the City Centre, Fosse Park and Meridian;
- (d) work to ensure that development meets present needs, minimises air pollution and car journeys, while protecting the needs of future generations; and
- (e) recommission a carbon audit of our activities to ensure that all possible actions are being taken and that new and emerging technologies and approaches are utilised to reduce the Council's carbon footprint.

